

# SANITARY DN CONNECTION TANK WELDABLE SIGHT GLASS

# Douglass

See more, see better



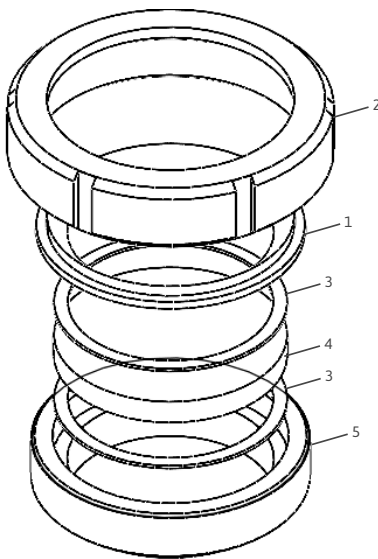
# TANK WELDABLE SIGHT GLASS SANITARY DN CONNECTION

## Overview:

A Douglass weldable sight glass is a critical component in various industrial tanks, providing a clear view of the tank's interior for monitoring purposes. It is particularly important in sanitary applications where hygiene and cleanliness are paramount, such as in the food, beverage, pharmaceutical, and biotech industries.

## Application:

These sight glasses are especially useful in Chemical and Pharmaceutical Industry, Food and Beverage Industry, chemical, and other industries where direct observation of the tank's contents is crucial for controlling and monitoring the process.



## Parts and Materials:

Item	Part name	Material options
1	Support	· Stainless Steel 316L · Stainless Steel 304
2	Cover Flange	· Stainless Steel 316L · Stainless Steel 304
3	Gasket (max temp)	· Buna · Neoprene · Teflon · Sanitary Rubber · EPDM · Viton
4	Sight Glass (max temp)	· DIN7080 Tempered Borosilicate · DIN8902 Tempered Soda Lime · Polycarbonate · Quartz
5	Base	· Stainless Steel 316L · Stainless Steel 304

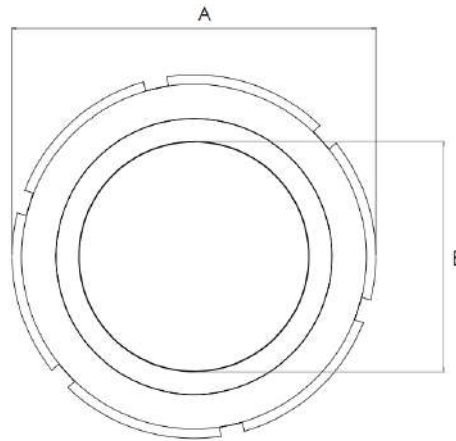
## Installation:

The numbers in the following installation instructions refer to the drawing above. After properly welding the cover flange (2) onto the vessel wall, assemble the gasket (3), sight glass (4), gasket (3), and cover flange (2) in that order.

## Benefits:

- **Improvement in Quality Control:** They allow direct visual inspection, which can prevent quality issues before they escalate.
- **Operational Safety:** By allowing observation without the need to open the tank, the risk of exposure to hazardous substances is minimized.
- **Ease of Maintenance:** The weldability and robust design simplify the installation and maintenance of the sight glass.

# TANK WELDABLE SIGHT GLASS SANITARY DN CONNECTION



TECHNICAL INFORMATION		
ID	A (Total Diam)	B (Visible Diam)
DN10	38.00 mm	10.00 mm
DN15	44.00 mm	16.00 mm
DN20	54.00 mm	20.00 mm
DN25	63.00 mm	26.00 mm
DN32	70.00 mm	32.00 mm
DN40	78.00 mm	38.00 mm
DN50	92.00 mm	50.00 mm

TECHNICAL INFORMATION		
ID	A (Total Diam)	B (Diam Visible)
DN65	112.00 mm	66.00 mm
DN80	127.00 mm	81.00 mm
DN90	138.00 mm	89.00 mm
DN100	148.00 mm	100.00 mm
DN125	178.00 mm	125.00 mm
DN150	210.00 mm	150.00 mm

## DON'TS

- DON'T overtighten the bolts or clamps as this can stress and crack the sight glass or body.
- DON'T use abrasive cleaning agents or tools that could scratch or damage the sight glass.
- DON'T use with Incompatible Fluids.
- DON'T ignore leaks; address them immediately to prevent system contamination or damage.
- DON'T subject the sight flow indicator to pressures beyond its rated capacity.
- DON'T use any installation methods or operational practices that are not recommended by the manufacturer.
- DON'T expose the sight flow indicator to rapid temperature changes, which can cause thermal shock and damage the glass.
- DON'T neglect regular maintenance, as this is crucial for the longevity and reliability of the sight flow indicator.

## DO'S

- DO periodically inspect the sight flow indicator for any signs of wear, damage, or leaks.
- DO keep the sight flow indicator clean to ensure visibility and proper operation. Use appropriate cleaning agents that are compatible with the materials of the indicator.
- DO immediately replace any damaged or worn components to maintain the integrity of the system.
- DO use adequate supports and clamps to secure the sight flow indicator and prevent vibration or movement.

## Maintenance

- Regularly check ZIGHT glass for clouding, scratching, erosion, or corrosion. Inspect daily to establish a routine replacement schedule.

## Cleaning

- Use non-abrasive cleaners for ZIGHT glass. If needed, use diluted hydrochloric acid, but avoid wire brushes or abrasive materials.

## Inspection

- Examine the glass for scratches, corrosion, chips, cracks, or flaws with bright, angled light. Replace glass that is cloudy, roughened, or doesn't clean well.

## Storing

- Keep ZIGHT gauge glass in its original packaging until ready to install.

## Satisfaction Guarantee

